

B. Akkadian Period (ca. 2350–2193 B.C.)

1. Tell Brak / Nagar

a. Tombs

1. Child Tomb, Area CH (Akkadian buildings), Room 14, Level 3.

- a. 1 bracelet Fig./ ID : 2TB1

Copper.

Bibliography : MALLOWAN M.E.L., 1947, p. 70.

b. Deposits

2. Ritual Closure Deposit 1883, Area FS (Monumental Building), Level 5.

Found on top of the fill of the eastern wall of the cella of the temple and including bronze awls, chisels, a mirror, a toggle-pin with its head broken and

- a. 1 toggle-pin Fig. 54-55 ID : 2TB2

Tubular, with a small, irregular and oval head.

Hole pierced through the upper part of the shaft, still with some mineralized material inside.

Bronze.

Bibliography : OATES D. et alii, 2001, p. 233-4 ; 572-3, fig. 245-7; 478, n° 47.



Fig. 54 : Bronze toggle-pin from FS 1883.



Fig. 55 : Bronze toggle-pin from FS 1883.

- b. 1 toggle-pin Fig. 56-57 ID : 2TB3

Tubular, with a large, round and domed head.

Hole pierced through the upper part of the shaft.

Bronze.

Bibliography : OATES D. et alii, 2001, p. 233-4 ; 572-3, fig. 245-7; 478, n° 48.

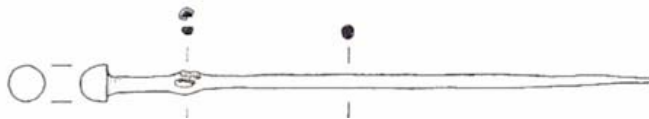


Fig. 56 : Bronze toggle-pin from FS 1883.



Fig. 57 : Bronze toggle-pin from FS 1883.

- c. 2 toggle-pin Fig.58-59 ID : 2TB4

Tubular, with a large, domed and oval head.

Hole pierced within the upper part of the very long shaft.

Bronze.

Bibliography : OATES D. et alii, 2001, p. 233-4 ; 572-3, fig. 245-7; 478, n° 49.



Fig. 58 : Bronze toggle-pin from FS 1883.

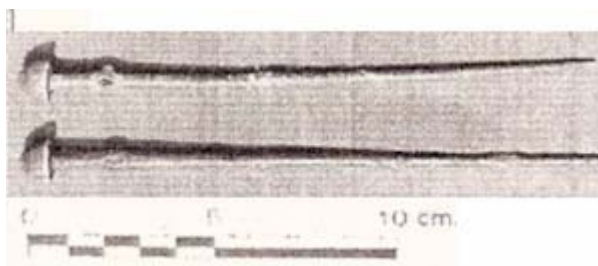


Fig. 59 : Bronze toggle-pins from FS 1883.

3. Ritual Closure Deposit 1957, Area FS (Monumental Building), Level 5.

Found inside the fill of the southwest corner of the temple courtyard next to the following one and contained

- a. 1 bead Fig. 60 ID : 2TB5
 Double conoid.
 Carnelian.

Bibliography : OATES D. et alii, 2001, p. 44-7; 225-235; 560-6, 572-3; 576-9, fig. 50-1; 240-44; 472-5; 478; 480-1, n° 64.

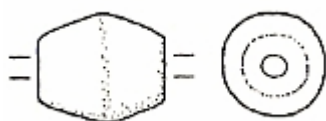


Fig. 60 : Carnelian double conoid bead from FS 1958.

- b. 1 bead Fig. 61 ID : 2TB6
 Disc-shaped.
 Shell.

Bibliography : OATES D. et alii, 2001, p. 44-7; 225-235, 602, fig. 493, n° 36.

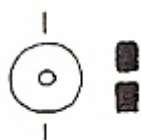


Fig. 61 : Shell disc-shaped bead from FS 1958.

- c. 1 bead Fig./ ID : 2TB7
 Dentalium cyl. (?)
 Bibliography : OATES D. et alii, 2001, p. 231, table 18.

4. Ritual Closure Deposit 1958, Area FS (Monumental Building), Locus 1958, Level 5.

Found inside the fill of the southwest corner of the temple, Courtyard 43, originally placed in a cloth or a leather bag containing some remains of silver ingots, sickle blades and

- a. 1 headband Fig. 62 a/ b ID : 2TB8
 5 ring-shaped beads, one with incised decoration.
 2 length of chain (60 links, 43 links and 17 loose links), with links composed of loop bent over the adjoining loop and soldered to itself.
 Gold and silver.

Bibliography : OATES D. et alii, 2001, p. 44-7; 225-235; 572-3; 576-9, fig. 50-1; 240-241, 472-5; 478; 480-1, n°150-2.

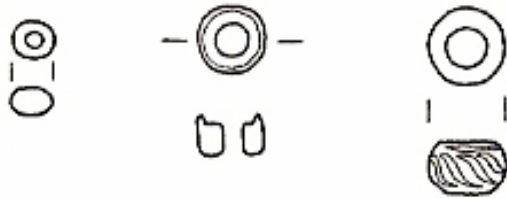


Fig. 62 a : Gold beads from FS 1958.



Fig. 62 b : Silver chains from FS 1958.

b. 1 necklace (?)

Fig. 63-68

ID : 2TB9

137 beads shaped as follows : ridged barrel (1), flat disc (6), large or small quadruple spirals (3), double spiral (1), flat-winged disc (2), barrel (10), cylinder (68), discs (45), tubular (2) and ribbed-ball (1).

Silver.

Bibliography : OATES D. et alii, 2001, p. 44-7; 225-235; 560-6, 572-3; 576-9, fig. 50-1; 240-44; 472-5; 478; 480-1, n°139-49.



Fig. 63 : Ridged-barrel silver bead from FS 1958.

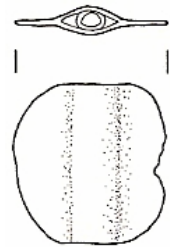


Fig. 64 : Flat disc silver bead from FS 1958.

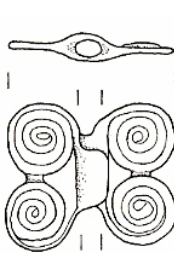


Fig. 65 : Large and small spiral silver beads from FS 1958.

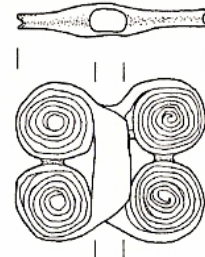


Fig. 66 : Silver simple spiral bead from FS 1958.



Fig. 67 : Silver disc-shaped bead from FS 1958.





Fig. 68 : Melon-shaped silver bead from FS 1958.

- c. 1 pendant Fig. 69-70 ID : 2TB10
 Standing woman-shaped, with hairs falling over shoulders, robe covering left hand and shoulder, face detailed.
 Lapis-lazuli.
 Bibliography : OATES D. et alii, 2001, p. 44-7; 225-235; 560-6, 572-3; 576-9, fig. 50-1; 240-44; 472-5; 478; 480-1, n°109¹.



Fig. 69 : Lapis-lazuli woman-shaped pendant from FS 1958.

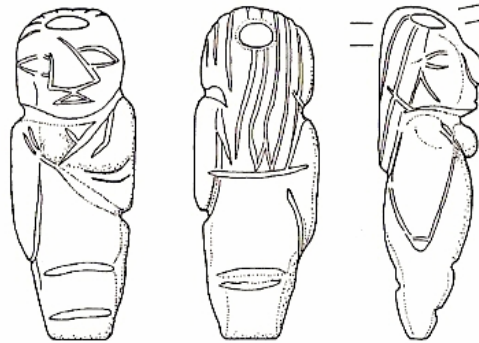


Fig. 70 : Lapis-lazuli woman-shaped pendant from FS 1958.

- d. 1 pendant Fig. 71-72 ID : 2TB11
 Reclining bull-shaped, head missing, detailed only on a side.
 Lapis-lazuli.
 Bibliography : OATES D. et alii, 2001, p. 44-7; 225-235; 560-6, 572-3; 576-9, fig. 50-1; 240-44; 472-5; 478; 480-1, n° 110.

¹ Mistake in the numbering of these items : female pendant is not n° 21 as indicated by the publisher but n° 109.

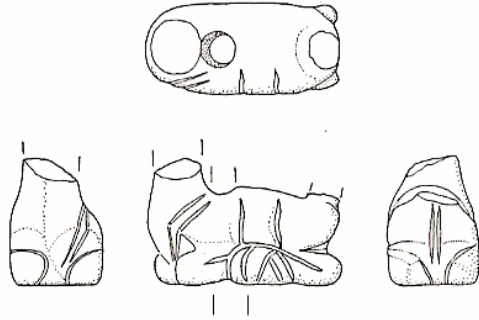


Fig. 71 : Lapis-lazuli bull-shaped pendant from FS 1958.

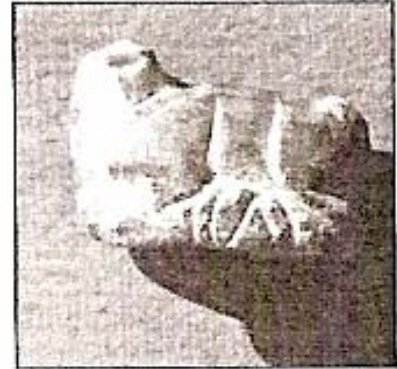


Fig. 72 : Lapis-lazuli bull-shaped pendant from FS 1958.

- e. 1 pendant Fig. 73-74 ID : 2TB12
 Fly-shaped.
 Lapis-lazuli.

Bibliography : OATES D. et alii, 2001, p. 44-7; 225-235; 560-6, 572-3; 576-9, fig. 50-1; 240-44; 472-5; 478; 480-1, n° 108.

Fig. 73 : Lapis-lazuli fly-shaped pendant from FS 1958.

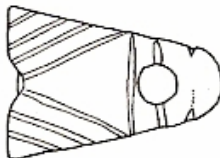
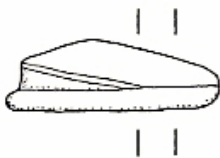
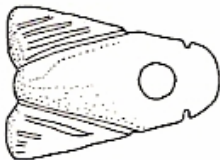


Fig. 74 : Lapis-lazuli fly-shaped pendant from FS 1958.



- f. 1 pendant Fig. 75 ID : 2TB13
 Tear-shaped.
 Lapis-lazuli.

Bibliography : OATES D. et alii, 2001, p. 44-7; 225-235; 560-6, 572-3; 576-9, fig. 50-1; 240-44; 472-5; 478; 480-1, n° 106.



Fig. 75 : Lapis-lazuli tear-shaped pendant from FS 1958.

- g. 26 beads Fig. 76-79 ID : 2TB14
 Disc-shaped (5), cylindrical (2), Large (4) and small barrel-shaped (4).
 Carnelian.

Bibliography : OATES D. et alii, 2001, p. 44-7; 225-235; 560-6, 572-3; 576-9, fig. 50-1; 240-44; 472-5; 478; 480-1, n° 60-62, n° 65-66, 63-64.

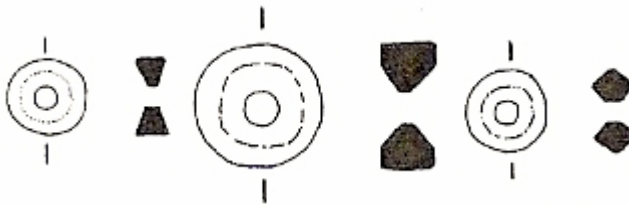


Fig. 76 : Carnelian disc-shaped beads from FS 1958.



Fig. 77 : Carnelian cylindrical beads from FS 1958.

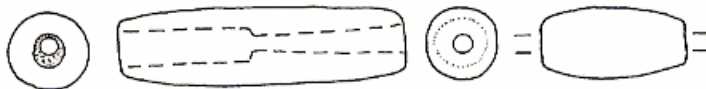


Fig. 78 : Carnelian barrel-shaped beads from FS 1958.

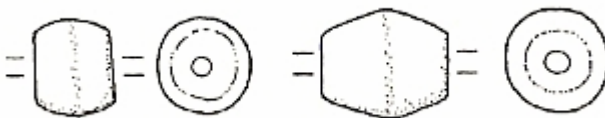


Fig. 79 : Carnelian double conoid beads from FS 1958.

- h. 1 bead Fig. 80 ID : 2TB15
 Disc-shaped.
 Rock Crystal.

Bibliography : OATES D. et alii, 2001, p. 44-7; 225-235; 560-6, 572-3; 576-9, fig. 50-1; 240-44; 472-5; 478; 480-1, n° 74.



Fig. 80 : Rock-crystal bead from FS 1958.



- i. 1 bead Fig./ ID : 2TB16
 Disc-shaped.
 Stone.
 Bibliography : OATES D. et alii, 2001, p. 44-7; 225-235; 560-6, 572-3; 576-9, fig. 50-1; 240-44.
- j. 2 beads Fig. 81 ID : 2TB17
 Barrel-shaped, white coloured (1), sphere shaped, green coloured (1).
 Frit.
 Bibliography : OATES D. et alii, 2001, p. 44-7; 225-235; 560-6, 572-3; 576-9, fig. 50-1; 240-44; 472-5; 478; 480-1, n° 22.

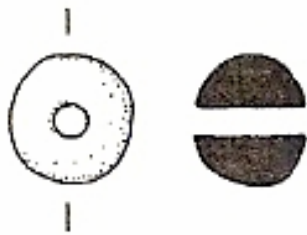


Fig. 81 : Frit spherical bead from FS 1958.

- k. 4 beads Fig. 82-84 ID : 2TB18
 Cylindrical (1), ribbed ball/melon shaped (2), flat-diamond shape (1).
 Green-glazed items.
 Faïence.
 Bibliography : OATES D. et alii, 2001, p. 44-7; 225-235; 560-6, 572-3; 576-9, fig. 50-1; 240-44; 472-5; 478; 480-1, n°25, 32, 51.



Fig. 82 : Faïence cylindrical bead from FS 1958.

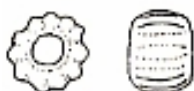


Fig. 83 : Faïence ribbed ball-shaped bead from FS 1958.



Fig. 84 : Flat-diamond shape bead from FS 1958.

- l. 1 bead Fig./ ID : 2TB19
 Shell, *Arcularia*.
 Bibliography : OATES D. et alii, 2001, p. 44-7; 225-235.

- m. 1 pendant Fig. 85 ID : 2TB20
 Ring-shaped with a pierced, soldered, circular suspension device on the top of it.
 Gold.
 Bibliography : OATES D. et alii, 2001, p. 44-7; 234-5; 572-3; 576-9, fig. 50-1; 478; 480-1, n°153.

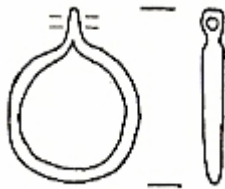


Fig. 85 : Gold pendant from FS 1958.

- n. 2 pendants Fig. 86-87 ID : 2TB21
 Flat sheet, cut as a circles, domed and pierced following a concentric pattern.
 Tubular ridges.
 Electrum.
 Bibliography : OATES D. et alii, 2001, p. 44-7; 234-5; 572-3; 576-9, fig. 50-1; 478; 480-1, n°136-7.

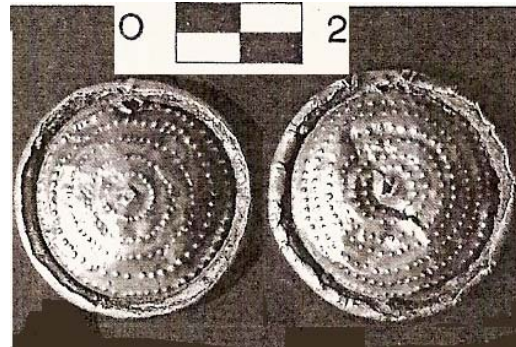
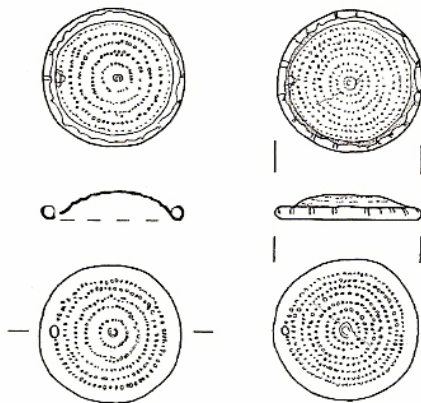


Fig. 86 : Electrum pendants from FS 1958.

Fig. 87 : Electrum pendants from FS 1958.

- o. 1 head of a toggle-pin (?) Fig. 88 ID : 2TB22
 Small, damaged double spiral.
 Silver.
 Bibliography : OATES D. et alii, 2001, p. 44-7; 234-5; 241; 572-3; 576-9, fig. 50-1; 478; 480-1, n°116.



Fig. 88 : Bronze spiral from FS 1958.

p. 1 toggle-pin Fig. 89 ID : 2TB23

Small, round and domed head.

Tubular, hole pierced through the upper part of the very long shaft.

Bronze.

Bibliography : OATES D. et alii, 2001, p. 44-7; 234-5; 241; 572-3; 576-9, fig. 50-1; 478; 480-1, n° 50.



Fig. 89 : Bronze toggle-pin from FS 1958.

q. 1 pectoral Fig. 90 ID : 2TB24

Circular plate with a domed centre and a lot of perforations all along the border of the object, decorated with concentric ridges and small triangles, posed as a rosette.

Silver.

Bibliography : OATES D. et alii, 2001, p. 44-7; 234-5; 572-3; 576-9, fig. 50-1; 478; 480-1, n° 138.

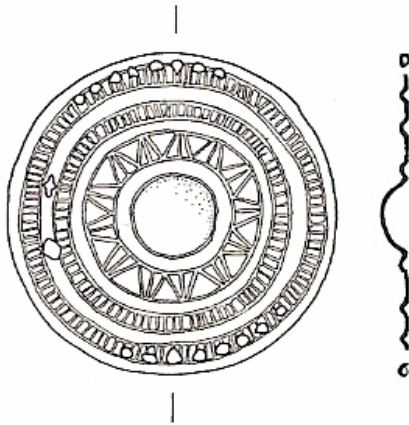


Fig. 90 : Silver pectoral from FS 1958.

r. 6 rings Fig. 91 ID : 2TB25

Corroded, some incomplete.

Bronze/copper².

Bibliography : OATES D. et alii, 2001, p. 44-7; 234-5; 572-3; 576-9, fig. 50-1; 478; 480-1, n° 111.

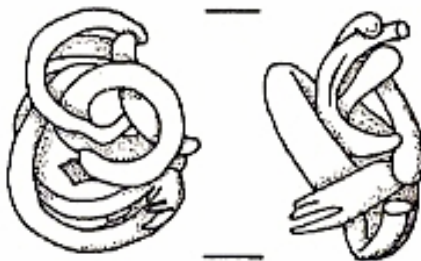


Fig. 91 : Bronze/copper rings from FS 1958.

² OATES D. et alii, 2001, p. 234; 576, fig. 480, n° 111

5. Closure Deposit 545-549, Area SS (Monumental Building), Loci 545-549, Level 5.

Discovered on the floor of courtyard 8, south of the façade, near the dais. A large number of nails surrounded a mass of copper and bronze corroded items, including

- a. 1 pendant Fig. 92 ID : 2TB26
Animal-shaped.
Silver.

Bibliography : OATES D. et alii, 2001, p. 44-7; 234-5; 572-3; 576-9, fig. 50-1; 478; 480-1, n° 154.

Fig. 92 : Silver pendant from SS545-549.



- b. 1 pendant Fig. 93 ID : 2TB27
Foot-shaped.
Stone.

Bibliography : OATES D. et alii, 2001, p. 44-7; 234-5; 572-3; 576-9, fig. 474, n° 84.

Fig. 93 : Stone foot pendant from SS 545-549.



- c. 6 beads Fig. 94-96 ID : 2TB28
Short cylinder (1), barrel (1), biconical (1), triangular (1), flat-diamond (1), rosette (1).
Lapis-lazuli.

Bibliography : OATES D. et alii, 2001, p. 44-7; 234-5; 566-7, fig. 475, n° 105, 101, 102.



Fig. 94 : Triangular carnelian bead from SS 545-549.

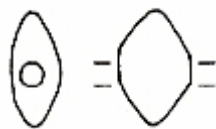


Fig. 95 : Flat-diamond bead from SS 545-549.

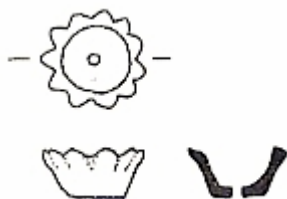


Fig. 96 : Rosette bead from SS 545-549.

- d. 21 beads Fig. 97 ID : 2TB29
 Disc-shaped (19), biconical (1), long-barrel (1).
 Carnelian.
 Bibliography : OATES D. et alii, 2001, p. 44-7; 225-35; 564, fig. 474, n° 69.



Fig. 97 : Biconical carnelian bead from SS 545-549.

- e. 1 bead Fig./ ID : 2TB30
 Disc-shaped.
 Rock-Crystal.
 Bibliography : OATES D. et alii, 2001, p. 44-7; 225-35.

- f. 1 bead Fig. 98 ID : 2TB31
 Long rectangular.
 Jet.
 Bibliography : OATES D. et alii, 2001, p. 44-7; 225-32; 572-3; 576-9, fig. 50-1; 474, n° 73.

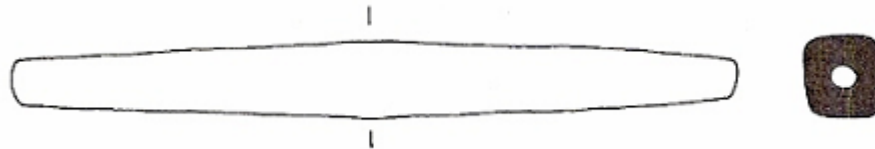


Fig. 98 : Jet bead from SS 545-549.

- g. 4 beads Fig./ ID : 2TB32
 Disc-shaped (1), cylindrical (2), square (1).
 Stone.
 Bibliography : OATES D. et alii, 2001, p. 44-7; 2325-32.

- h. 7 beads Fig. 99-100 ID : 2TB33
 Green cylinder (1), white (1) and brown barrel (1), brown rectangular (1), cross-hatched cylinder (1), yellow spacer (1).
 Frit.
 Bibliography : OATES D. et alii, 2001, p. 44-7; 225-35; 560-3, fig. 472 ; 474, n° 12, 59.

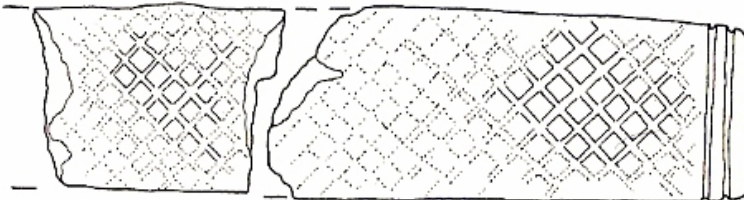


Fig. 99 : Frit hatched cylinder SS 545-549.

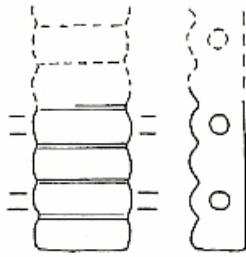


Fig. 100 : Frit spacer from SS 545-549.

- i. 32 beads Fig. 101-106 ID : 2TB34
 Disc-shaped (2), cylinder (8), barrel (2), sphere (3), melon (4), biconical (9),
 segmented barrel (1), hubbed barrel (1), flat diamond (1), bulls head (1).
 Green-glazed.
 Faïence.
 Bibliography : OATES D. et alii, 2001, p. 44-7; 234-5; 560-3-3, fig. 472-3, n° 17,
 32, 23-4, 52, 47, 51, 15.

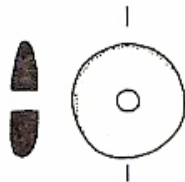


Fig. 101 : Faïence disc-shaped bead from SS 545-549.



Fig. 102 : Melon-shaped faïence bead from SS 545-549.

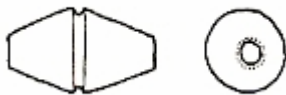


Fig. 103 : Biconical faïence bead from SS 545-549.



Fig. 104 : Segmented barrel-shaped faïence bead from SS 545-549.



Fig. 105 : Flat diamond-shaped bead from SS 545-549.



Fig. 106 : Faïence bull head bead from SS 545-549.

- j. 32 beads Fig. 107 ID : 2TB35
 Striped *Nassa sarta* (12), white sea-snail/ ? *nerite* (14), *Mitradae* (1), *dentalium*
 (2), discs (3).
 Shell.

Bibliography : OATES D. et alii, 2001, p. 44-7; 234-5; 602-3, fig. 241; 493, n° 33.



Fig. 107 : *Nassa sarta* shell beads from SS 545-549.

k. 26 beads (?) Fig. 108 ID : 2TB36

Indian Ocean shells.

Bibliography : OATES D. et alii, 2001, p. 296, fig. 241.



Fig. 108 : Indian Ocean Shell beads from SS 545-549.

l. rings Fig./ ID : 2TB37

Corroded mass.

Silver.

Bibliography : OATES D. et alii, 2001, p. 44-7; 234-5; 572-3; 576-9, fig. 50-1; 478; 480-1, n°111.

m. 7 rings Fig./ ID : 2TB38

Fragmentary.

Bronze/copper.

Bibliography : OATES D. et alii, 2001, p. 44-7; 234-5; 572-3; 576-9, fig. 50-1; 478; 480-1, n°111³.

6. Beads from Floor of Room 21, Area SS (Temple Complex), loci 1238, 1240, Level 5

a. 1 bead Fig. 109 ID : 2TB39

Large cylinder.

Stone.

Bibliography : OATES D. et alii, 2001, p.225-231; 564-65, fig. 474, n° 88.

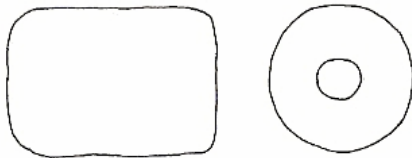


Fig. 109 : White marble-like stone bead from SS 1238-1240.

b. 87 beads Fig. 110-111 ID : 2TB40

White disc-shaped (75), black sphere (1), white segmented (2), black biconical (1), brown frags (8).

Frit.

³ OATES D. et alii, 2001, p. 235.

Bibliography : OATES D. et alii, 2001, p. 225-32; 562-3, fig. 473, n° 42, 53.

Fig. 110 : White segmented bead from SS 1238-1240

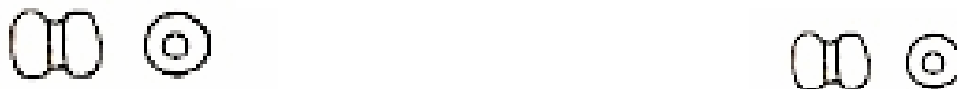


Fig. 111 : Black biconical bead from SS 1238-1240.

- c. 25 beads Fig./ ID : 2TB41
Knobbly (*Mitradae* : 10), sea-snail/ ? *nerite* (15).
Shell.
Bibliography : OATES D. et alii, 2001, p. 225-31.

- d. 2 pendants Fig. 112-113 ID : 2TB42
Fly-shaped.
Bone.
Bibliography : OATES D. et alii, 2001, p. 44-7; 225-35; 600-601, fig. 240, 492, n° 21.

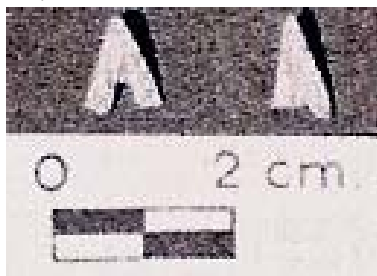


Fig. 112 : Fly-shaped bone beads from SS 1238-1240.

Fig. 113 : Bone fly-shaped beads from SS 1238-1240.



7. Jar, Area FS (Monumental Complex), Room 11, locus 1454, Level 3.

- b. 1 bead Fig./ ID : 2TB43
Disc-shaped.
Stone.
Bibliography : OATES D. et alii, 2001, p. 225.
- c. 311 beads Fig./ ID : 2TB44
Disc-shaped, 156 white and 155 blue.
Frit.
Bibliography : OATES D. et alii, 2001, p. 225.
- d. 1 bead Fig. 114 ID : 2TB45
Tear-shaped.
Blue.
Frit.
Bibliography : OATES D. et alii, 2001, p. 225; 562-3, fig. 240, 473, n° 57.

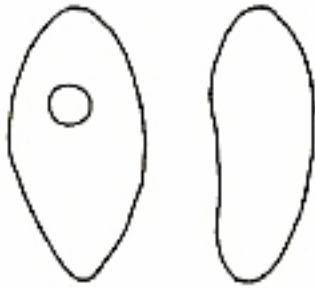


Fig. 114 : Frit Tear-shaped bead from FS 11.

c. Hoards

8. Vase, Area CH (Akkadian Buildings), Room 12, Level 3.

In the southeast corner of the room, sub-surface soil contained also some copper objects, as a chisel,

- a. 1 crown (?)⁴ Fig. 115 ID : 2TB46

Tubular, penannular, interlaced.

Copper.

Bibliography : MALLOWAN M.E.L., 1947, p. 71; 177-180, pl. XXXV, top row; LIV; LXV, n° 5.

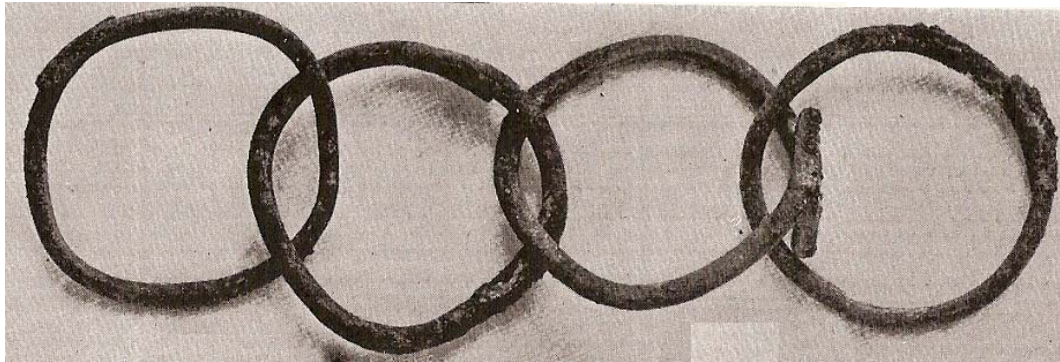


Fig. 115 : Copper interlaced bracelets from Vase CH, 12.

- b. 1 headband (?) Fig. 116 ID : 2TB47

Fragments of a strip silver diadem, or headband (?). one piece is a silver strip fragment with ends rounded off.

Silver.

Bibliography : MALLOWAN M.E.L., 1947, p. 71; 177-180, pl. XXXV, second row; LIV; LXV, n° 5.

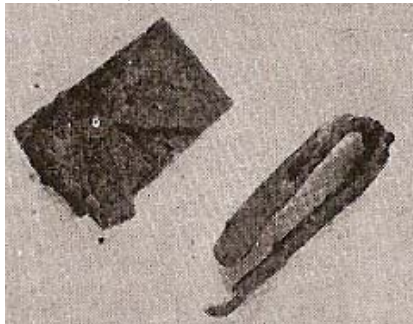


Fig. 116 : Silver fragments of a headband (?) from Vase CH, 12.

⁴ This object has been put in the category of 'crown » because similar parallels were recovered from Ur Royal Cemetery by L Whooley.

- c. 1 necklace Fig. 117 ID : 2TB48
 7 gold coiled pendants with strip-gold spacers, little silver disc beads and a few lapis-lazuli discs and cylindrical beads on the lower string.
 Upper string : gold spacer beads, silver discs, heavy double-conoid bead with sub-spherical ends, gold plain double conoid bead, discs and balls; steatite cylindrical bead with 2 lapis-lazuli ends shaped as serrated discs and engraved with a seven-pointed stellar design.
 Gold, silver, lapis-lazuli, glazed stettite.
 Bibliography : MALLOWAN M.E.L., 1947, p. 71; 177-180, pl. XXXV, bottom row; LIV; LXV, n° 5.

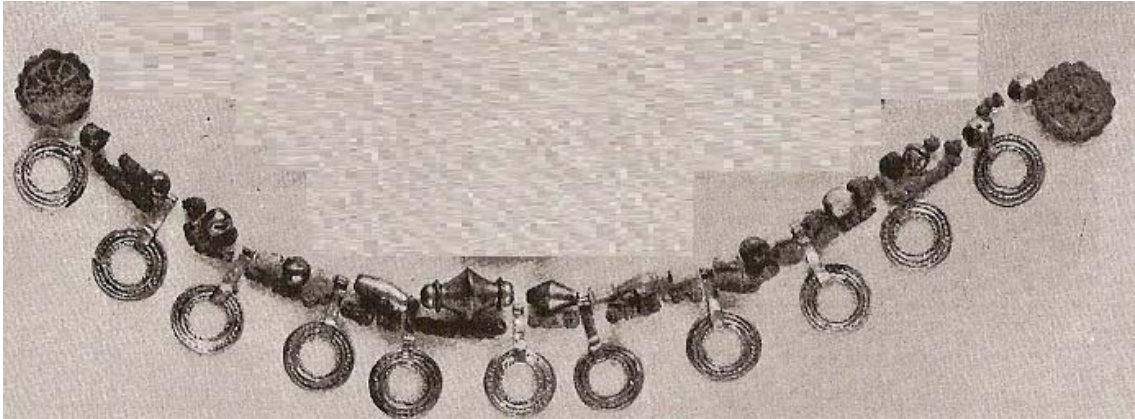


Fig. 117 : Necklace from Vase CH, 12.

- d. 1 necklace Fig. 118 ID : 2TB49
 Lapis-lazuli : tubular, barrel-shaped, spherical, double conoid; carnelian : flattened double conoid, cylindrical, spherical; agate and sard : cylindrical and flattened double conoid; rock crystal : ring-beads.
 Lapis-lazuli, carnelian, agate, sard, onyx, rock crystal.
 Bibliography : MALLOWAN M.E.L., 1947, p. 71; 177-180, pl. XXXV, bottom row; LIV; LXV, n° 5.



Fig. 118 : Necklace from Vase CH, 12.

- e. 1 necklace (?) Fig./ ID : 2TB50
 Corroded string.
 Silver and lapis-lazuli.

Bibliography : MALLOWAN M.E.L., 1947, p. 71; 177-180, pl. XXXV, top row; LIV; LXV, n° 5.

- f. 1 bead Fig. 119 ID : 2TB251
Segmented with flattened and elongated ends.
Carnelian.
Bibliography : MALLOWAN M.E.L., 1947, p. 71; 177-180, pl. XXXV, second row; LIV; LXV, n° 5.



Fig. 119 : Carnelian segmented bead from vase CH, 12.

- g. 1 pendant (?) Fig. 120 ID : 2TB52
Drop-shaped.
Steatite.
Bibliography : MALLOWAN M.E.L., 1947, p. 71; 177-180, pl. XXXV, top row; LIV; LXV, n° 5.



Fig. 120 : Drop-shaped steatite pendant (?) from Vase CH, 12.

- h. 1 toggle-pin head (?) Fig. 121 ID : 2TB53
Heavily corroded fragment, but magnifying-glass examination of the published picture tends to close with a double spiral design on the top of the object.
Silver.
Bibliography : MALLOWAN M.E.L., 1947, p. 71; 177-180, pl. XXXV, fourth, fifth and sixth rows; LIV; LXV, n° 5.



Fig. 121 : Head of a toggle-pin (?) from Vase CH, 12.

- i. 1 pectoral (?) Fig. 122 ID : 2TB54
 2 ornaments, one round and the other square, with boss centres. Magnifying-glass examination of the published pictures seems to reveal at least two holes pierced through the two upper corners of the larger one.
 Gold.
 Bibliography : MALLOWAN M.E.L., 1947, p. 71; 177-180, pl. XXXV, fourth, fifth and sixth rows; LIV; LXV, n° 5.

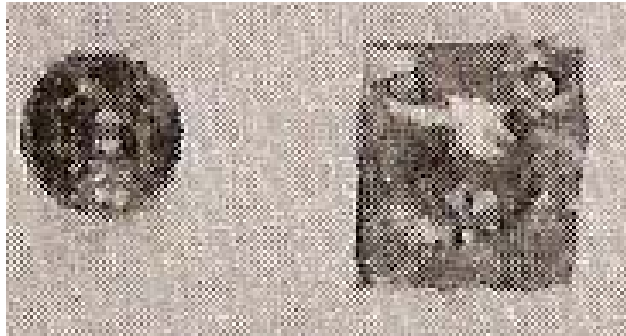


Fig. 122 : Gold ornaments from Vase CH, 12.

- j. 1 bracelet Fig. 123 ID : 2TB55
 Tubular, penannular.
 Silver.
 Bibliography : MALLOWAN M.E.L., 1947, p. 71; 177-180, pl. XXXV, top row; LIV; LXV, n° 5.



Fig. 123 : Silver bracelet from Vase CH, 12.

9. Vase, Area CH (Akkadian Buildings), Room 6, Level 3.

In the eastern extremity of the area, in a heavily destroyed Akkadian house, 1 metre below the surface,

- a. 1 earring/ hair-lock⁵ Fig. 124 ID : 2TB56
 Lunate end, single on one extremity and double on the other.
 Gold.
 Bibliography : MALLOWAN M.E.L., 1947, p. 71; 178-180, pl. XXXVI, n° 1; LIII, n° 39; LXXV, n° 2.

⁵ All these « earrings » might better be hair-locks, for the simple reason that, as having very large extremities, it must have been very hard to pass them through a small hole in the ear. But they seem to have the perfect width for hanging from hairlocks.



Fig. 124 : Gold lunate earring from Vase CH, 6.

- b. 1 earring/ hair-lock
Tubular, penannular.
Flat and pointed ends.
Gold.

Fig. 125

ID : 2TB57

Bibliography : MALLOWAN M.E.L., 1947, p. 71; 178-180, pl. XXXVI, n° 1; LIII, n° 34; LXXV, n° 3.



Fig. 125 : Gold earring From Vase CH, 6.

- c. 2 earrings/ hair-locks
Lunate ends.
Gold.

Fig. 126

ID : 2TB58

Bibliography : MALLOWAN M.E.L., 1947, p. 71; 178-180, pl. XXXVI, n° 1; LIII, n° 34; LXXV, n° 4, 8.



Fig 126 : Gold lunate earrings from Vase CH, 6.



- d. 1 earring/ hair-lock
Ribbed.
Gold.

Fig. 127

ID : 2TB59

Bibliography : MALLOWAN M.E.L., 1947, p. 71; 178-180, pl. XXXVI, n° 14; LXXV, n° 5.



Fig. 127 : Gold ribbed earring from Vase CH, 6.

- e. 1 earring/ hair-lock Fig.128 ID : 2TB60
 Thick and lunate ends.
 Gold.

Bibliography : MALLOWAN M.E.L., 1947, p. 71; 178-180, pl. XXXVI, n° 14; LIII, n° 38; LXXV, n° 9.



Fig. 128 : Gold earring from Vase CH, 6.

- f. 3 earrings/ hair-locks (?) Fig. 129 ID : 2TB61
 Thick lunate ends.
 Gold.

Bibliography : MALLOWAN M.E.L., 1947, p. 71; 178-180, pl. XXXVI, n° 14; LXXV, n° 13, 20, 26.

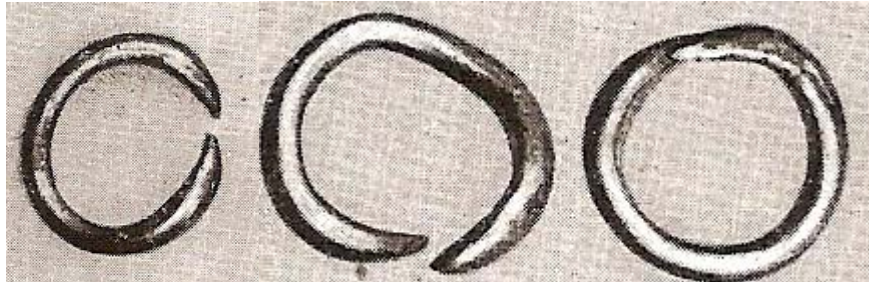


Fig. 129 : Gold thick, lunate ends earring from Vase CH, 6.

- g. 4 earrings/ hair-locks (?) Fig. 130 ID : 2TB62
 Lunate ends.
 Gold.

Bibliography : MALLOWAN M.E.L., 1947, p. 71; 178-180, pl. XXXVI, n° 14; LIII, n° 36; LXXV, n° 21, 22, 27, 34.

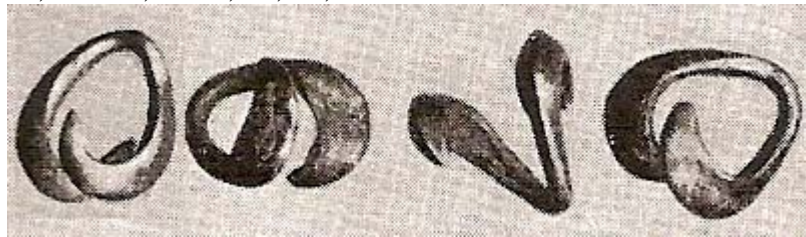


Fig. 130 : Gold lunate earrings from Vase CH, 6.

- h. 1 earring Fig. 131 ID : 2TB63
 Large crescent soldered to thin suspension device.
 Gold.

Bibliography : MALLOWAN M.E.L., 1947, p. 71; 178-180, pl. XXXVI, n° 14; LIII, n° 37; LXXV, n° 28.



Fig. 131 : Gold crescent-shaped earring from Vase CH, 6.

- i. 4 beads Fig. 132 ID : 2TB64
Double conoid.
Gold.
Bibliography : MALLOWAN M.E.L., 1947, p. 71; 178-180, pl. XXXVI, n° 14; LIII, n° 36; LXXV, n° 17, 18, 30, 31.

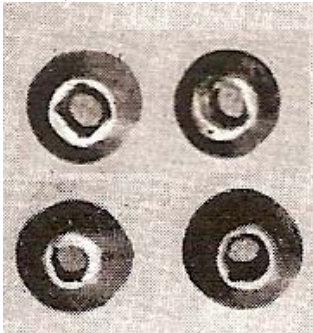


Fig. 132 : Gold double conoid beads from Vase CH,6.

- j. 1 pendant Fig. 133 ID : 2TB65
Bull head.
Gold, bitumen core.
Bibliography : MALLOWAN M.E.L., 1947, p. 71; 178-180, pl. XXXVI, n° 14; LXXV, n° 6.



Fig. 133 : Gold bull head pendant (?) from Vase CH,6.

- k. 2 bracelets Fig. 134 ID : 2TB66
Tubular, penannular.
Silver.
Bibliography : MALLOWAN M.E.L., 1947, p. 71; 178-180, pl. XXXVI, n° 1; LXXV, n° 6, 19.

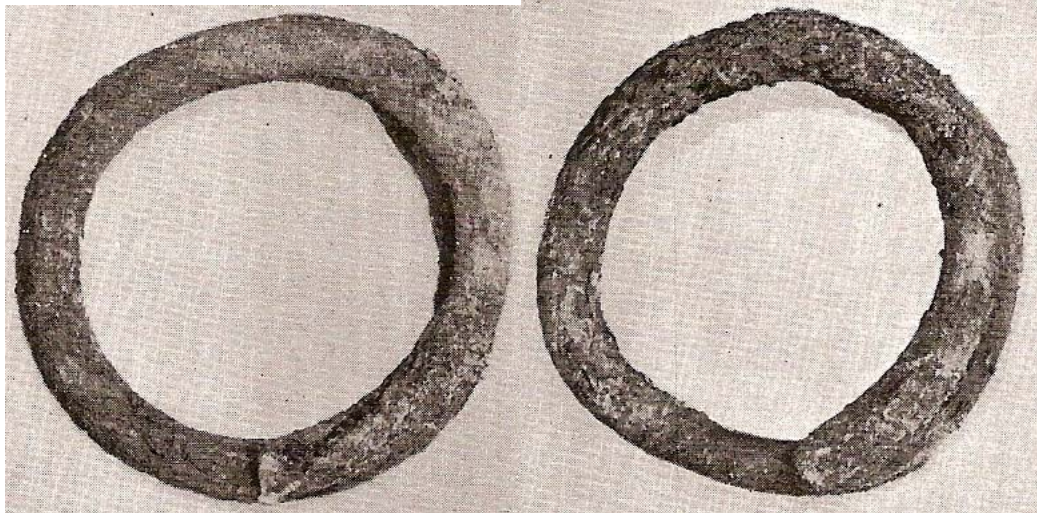


Fig. 134 : Silver bangles from Vase CH, 6.

10. Cup, Area ER (Akkadian Buildings), Room 6, Level 3.

Found under a cobble-pavement dating of the IIIrd Dynasty of Ur Period, but the following objects seem a century older, some raw silver wire or lump were included in the cup with

- a. 1 hair-lock Fig. 135 ID : 2TB67

Tubular, penannular.
Forms 5 spirals over itself.
Silver.

Bibliography : MALLOWAN M.E.L., 1947, p. 73; 176-177, pl. XV, n° 2; XXXII, n° 8; XXXIII, n° 2; XXXIV, XLIX, n° 3; LXXII, n° 13.

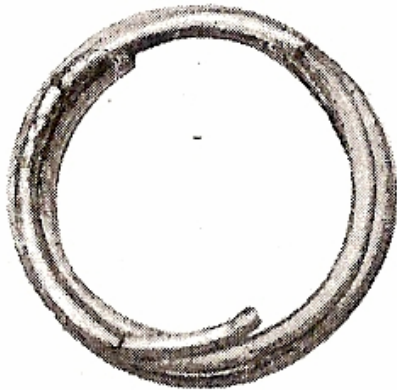


Fig. 135 : Silver hair-lock from Cup ER, 6.

- b. 3 earrings/ hair-locks Fig. 136 ID : 2TB68

Tubular, penannular.
Large extremities.
Silver.

Bibliography : MALLOWAN M.E.L., 1947, p. 73; 176-177, pl. XV, n° 2; XXXII, n° 8; XXXIII, n° 5, 7, 9; XXXIV, XLIX, n° 3; LXXII, n° 13.



Fig. 136 : Silver earrings from Cup ER, 6.

- c. 3 earrings/ hair-locks
 Tubular, penannular.
 Large extremities.
 Silver.

Fig. 137

ID : 2TB69

Bibliography : MALLOWAN M.E.L., 1947, p. 73; 176-177, pl. XV, n° 2; XXXII, n° 8; XXXIII, n° 4, 6, 8; XXXIV, XLIX, n° 3; LXXII, n° 13.



Fig. 137 : Silver earrings from Cup ER, 6.

- d. 1 necklace

Fig. 138

ID : 2TB70

Silver : double conoids, discs, barrels and ring bead with minute balls soldered on;
 steatite : drop pendants.
 Silver, steatite.

Bibliography : MALLOWAN M.E.L., 1947, p. 73; 176-177, pl. XV, n° 2; XXXII, n° 22; XXXIII, n° 4, 6, 8; XXXIV, XLIX, n° 3; LXXII, n° 13.

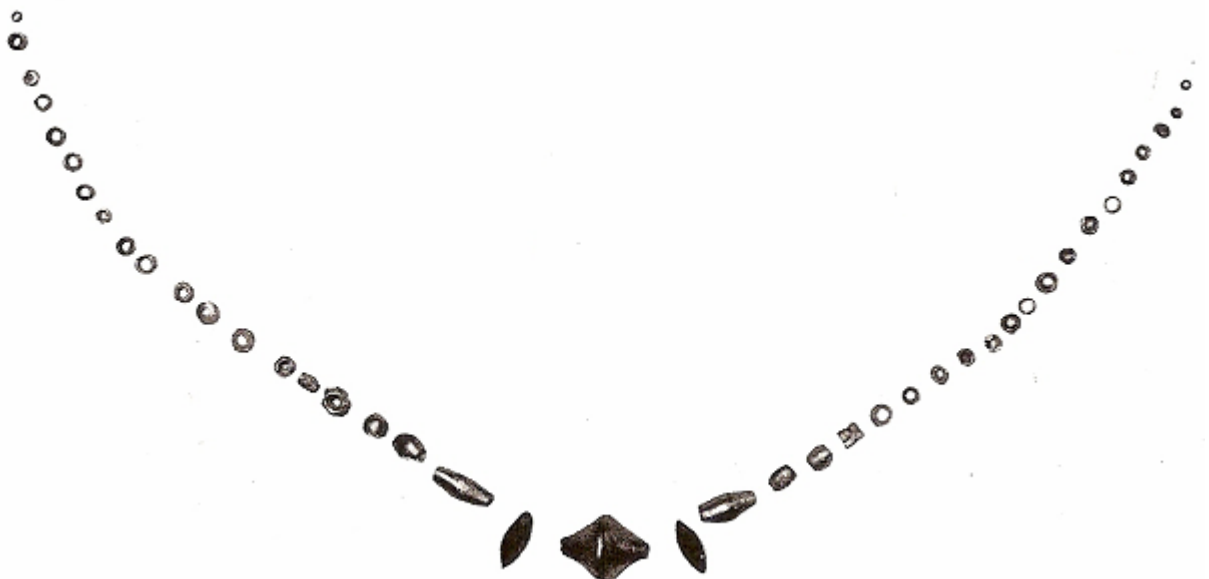


Fig. 138 : Silver and steatite beads necklace from Cup ER, 6.

- e. 2 beads
Barrel-shaped.
Corroded together.
Silver.
Bibliography : MALLOWAN M.E.L., 1947, p. 73; 176-177, pl. XV, n° 2; XXXII, n° 20; XXXIII, n° 4, 6, 8; XXXIV, XLIX, n° 3; LXXII, n° 13.

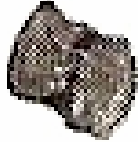


Fig. 139 : Silver beads from Cup ER, 6.

- f. 1 bead (?)
Oval-shaped; flat.
Silver.
Bibliography : MALLOWAN M.E.L., 1947, p. 73; 176-177, pl. XV, n° 2; XXXII, n° 14; XXXIII, n° 10; XXXIV, XLIX, n° 3; LXXII, n° 13.



Fig. 140 : Silver bead (?) from Cup ER, 6.

- g. 1 bead
Four spiral ends; flat.
Silver.
Bibliography : MALLOWAN M.E.L., 1947, p. 73; 172-177, pl. XV, n° 2; XXXII, n° 21; XXXIII, n° 10; XXXIV, XLIX, n° 3; LXXII, n° 13.

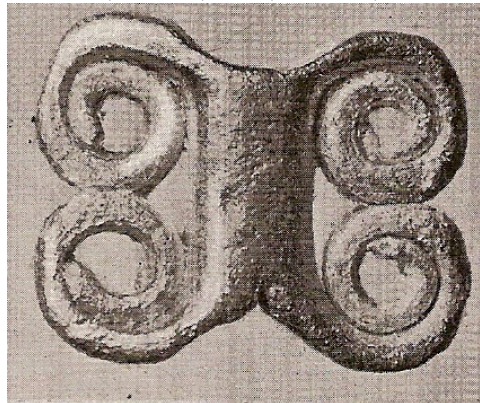


Fig. 141 : Silver spirals bead from Cup ER, 6.

- h. 1 pendant
Lanceolate.
Gold or electrum (?).
Bibliography : MALLOWAN M.E.L., 1947, p. 73; 176-177, pl. XV, n° 2; XXXII, n° 8; XXXIII, n° 10; XXXIV, XLIX, n° 3; LXXII, n° 13.



Fig. 142 : Gold or electrum lanceolate pendant from Cup ER, 6.

- i. 1 pendant Fig. 143 ID : 2TB75
 Circular plate with boss and hollow centre. Flattened rim with decoration of a repoussé dot design; hemispherical.
 Loop suspender on the reverse side of the object.
 Silver.
 Bibliography : MALLOWAN M.E.L., 1947, p. 73; 176-177, pl. XV, n° 2; XXXII, n° 8; XXXIII, n° 11; XXXIV, XLIX, n° 3; LXXII, n° 13.



Fig. 143 : Silver pendant from Cup ER, 6.

- j. 1 pectoral (?) Fig. 144 ID : 2TB76
 Fragments of a disc.
 Silver.
 Bibliography : MALLOWAN M.E.L., 1947, p. 73; 176-177, pl. XV, n° 2; XXXII, n° 19; XXXIII, n° 11; XXXIV, XLIX, n° 3; LXXII, n° 13.

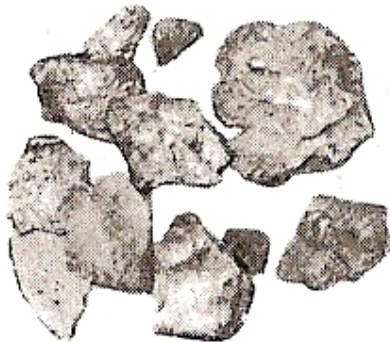


Fig. 144 : Silver pectoral (?) fragments from Cup ER, 6.

- k. 1 pendant Fig. 145 ID : 2TB77
 Roughly-shaped quartz pebble covered with one of the extremities encased in a golden cap and suspension twisted thread.
 Loop suspender on the top of the object.
 Quartz, gold.
 Bibliography : MALLOWAN M.E.L., 1947, p. 73; 176-177, pl. XV, n° 2; XXXII, n° 12; XXXIII, n° 11; XXXIV, XLIX, n° 3; LXXII, n° 13.



Fig. 145 : Quartz pendant from Cup ER, 6.

- l. 1 finger-ring (?) Fig. 146 ID : 2TB78
 Tubular, penannular.
 Silver.
 Bibliography : MALLOWAN M.E.L., 1947, p. 73; 176-177, pl. XV, n° 2; XXXII, n° 8; XXXIII, n° 3; XXXIV, XLIX, n° 3; LXXII, n° 13.



Fig. 146 : Silver finger-ring (?) from Cup ER, 6.

- m. 1 finger-ring (?) Fig. 147 ID : 2TB79
 Tubular, penannular.
 Silver.
 Bibliography : MALLOWAN M.E.L., 1947, p. 73; 176-177, pl. XV, n° 2; XXXII, n° 18; XXXIII, n° 3; XXXIV, XLIX, n° 3; LXXII, n° 13.



Fig. 147 : Silver finger-ring (?) from Cup ER, 6.

11. Vase, Area NSP (Naram-Sin Palace), Room 14, Level 3.

a. 1 earring/ hair-lock (?) Fig. 148 ID : 2TB80

Penannular, tubular.

Gold.

Bibliography : MALLOWAN M.E.L., 1947, p. 67; 159-180, pl. XXXVI, n° 29; LXV, n° 9.



Fig. 148: Gold earring from Vase NSP, 14.

b. 1 earring/ hair-lock (?) Fig. 149 ID : 2TB81

Fragment of a tubular item with one large lunate end.

Gold.

Bibliography : MALLOWAN M.E.L., 1947, p. 67; 159-180, pl. XXXVI, n° 32; LXV, n° 9.



Fig. 149: Gold earring fragment from Vase NSP, 14.

c. 1 necklace Fig. 150 ID : 2TB82

Ring, barrel, cylindrical, and flattened lentoid; fluted segmented faïence bead in the centre of the string.

Serpentine, faïence, shell, carnelian.

Bibliography : MALLOWAN M.E.L., 1947, p. 67; 159-180, pl. XXVII, n° 1; XXXI, n° 5; LXV, n° 9.



Fig. 150 : Necklace from Vase NSP, 14.

- d. 1 cylinder-seal (?) Fig. 151 ID : 2TB83
Thin, gold foil, maybe belonging to the decoration of cylinder-seal now lost.
Gold.

Bibliography : MALLOWAN M.E.L., 1947, p. 67; 159-180, pl. XXXI, n° 33; LXV, n° 9.



Fig. 151 : Gold cap from a cylinder-seal now lost from Vase NSP, 14.

- e. 1 toggle-pin Fig. 152 ID : 2TB84
Tubular, round and domed head.
Copper.

Bibliography : MALLOWAN M.E.L., 1947, p. 67; 159-180, pl. XXXI, n° 5; LXV, n° 9.



Fig. 152 : Copper toggle-pin from Vase NSP, 14.