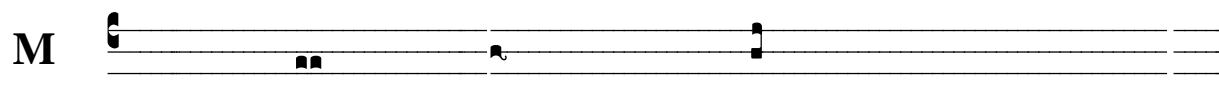


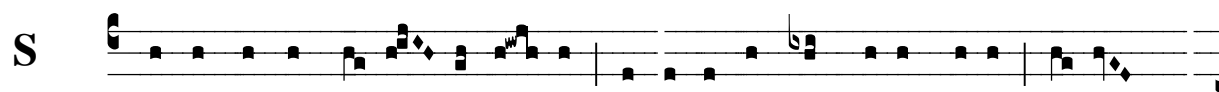
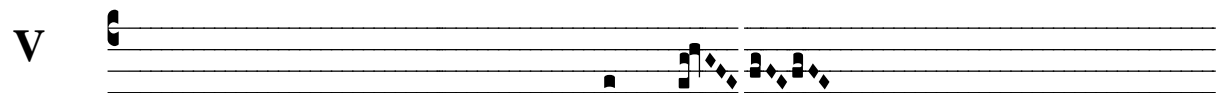
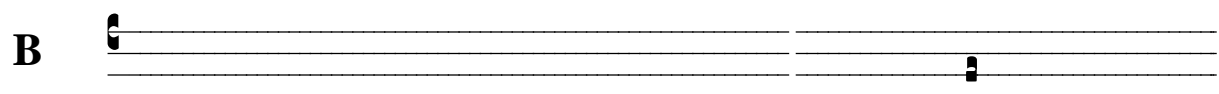
39. Feria VI. Hebd. I. in Quadragesima



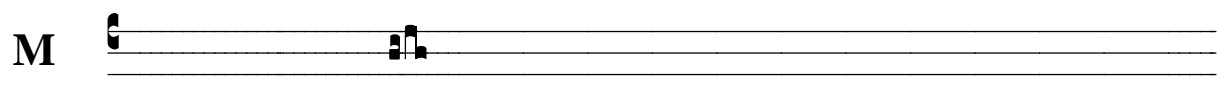
Ad- iu- tor me- us, * ti- bi psal- lam: qui- a De- us sus- cep- tor me- us es: *



De- us me- us, mi- se- ri- cor- di- a me- a. ∇ E- ri- pe me de i-



ni- mi- cis me- is, De- us me- us, et ab in- sur- gen- ti- bus in me li- be-



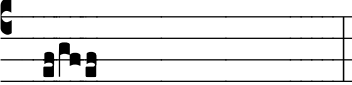
S



ra me, * De- us...

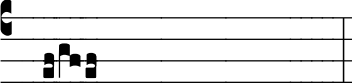
The Soprano staff begins with a C-clef on the first line. The melody starts on G4, moves to F#4, then E4, and continues with a descending eighth-note scale: D4, C4, B3, A3, G3, F3, E3, D3. The staff concludes with a double bar line.

M



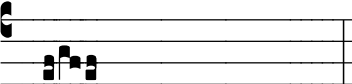
The Alto staff begins with a C-clef on the second line. The accompaniment consists of a sustained chord of G3, B3, and D4.

B



The Bass staff begins with a C-clef on the third line. The accompaniment consists of a sustained chord of G3, B3, and D4.

V



The Violoncello/Viola staff begins with a C-clef on the second line. The accompaniment consists of a sustained chord of G3, B3, and D4.